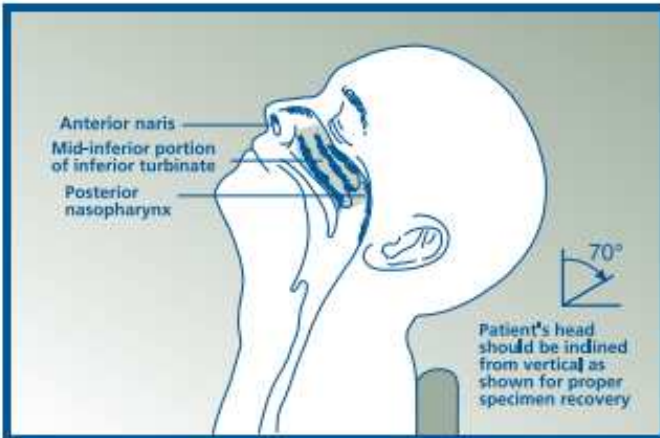


## Nasopharyngeal Collection instructions 47.05.A04



1. Use recommended infection prevention precautions.
2. Collect the specimen using Universal Transport Medium and a flocked swab (the flexible mini-tip). Do not bend swab prior to collection.
3. Patients tend to pull away from the procedure so asking them to sit with their head against the wall can be helpful.
4. Insert the swab into nostril straight back (not upward) and continue along the floor of the nasal passage for several centimeters until reaching the nasopharynx (resistance will be felt). The distance from the nose to ear gives an estimate of the distance the swab should be inserted.



5. Rotate the swab gently (for 10 seconds) to loosen and obtain infected epithelial cells.
6. Immediately insert and swirl the swab in the transport tube. Break off the swab shaft by bending it against the tube wall evenly at the pre-scored line.
7. Replace the cap securely to prevent leakage during transport.
8. Label the tube with two identifiers, collection date and time and initials. Place the tube in specimen bag being careful not to contaminate the outside of the bag.